

## EQ-5D-5L INDEX NORMS FOR ALBERTA POPULATION

June 2016



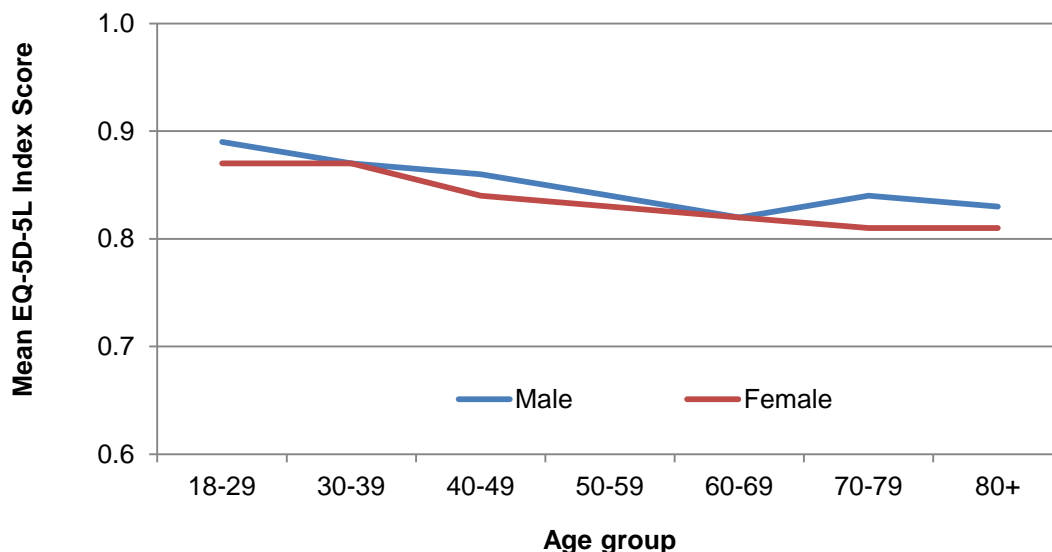


## EQ-5D-5L INDEX NORMS FOR ALBERTA POPULATION

In October 2014, the Health Quality Council of Alberta (HQCA) released the [2014 Alberta Population Norms for EQ-5D-5L](#) report. It outlined the Alberta population norms for the EuroQol Group's EQ-5D™ 5 level (EQ-5D-5L) instrument. Age, sex and Alberta Health Services (AHS) zone specific health profiles by each of the five dimensions (i.e. mobility, self-care, usual activities, pain/discomfort, and anxiety/depression), as well as overall self-rated health status scores (i.e., visual analogue scale (EQ-VAS)), were generated for the province.

At the time of that report, algorithms for calculating EQ-5D-5L index scores were not yet available for Canada, and index score norms for the Alberta population sample were not reported. As a scoring algorithm for the EQ-5D-5L index for Canadians has been developed,<sup>1</sup> this addendum to the 2014 report provides the Alberta EQ-5D-5L index norms. As in the [2014 Alberta Population Norms for EQ-5D-5L](#) report, EQ-5D-5L index score norms are presented by age, sex and AHS zones for the province.<sup>2</sup>

**Figure 1:** Mean EQ-5D-5L index scores for Alberta by age and sex



The mean EQ-5D-5L index score decreased as age increased and females reported a lower mean EQ-5D-5L index score than males (see Figure 1). Overall, however, the difference on the EQ-5D-5L index between women and men was not statistically significant ( $p=0.13$ ).

<sup>1</sup> Xie F, Pullenayegum E, Gaebel K, Bansback N, Bryan S, Ohinmaa A, Poissant L, Johnson JA, on behalf of the Canadian EQ-5D-5L Valuation Study Group. A time trade-off-derived value set of the EQ-5D-5L for Canada. *Med Care* 2016;54:98-105.

<sup>2</sup> For more information, please contact the Health Quality Council of Alberta: <http://hqca.ca>

The decreasing trend in EQ-5D-5L index scores with increasing age groups was statistically significant ( $p>0.01$ ) (see Table 1). Males and females showed different patterns of decreasing index scores with increasing age groups, but the overall decrease from 18-29 to 80+ age ranges was the same (-0.06 points).

**Table 1:** EQ-5D-5L index means and 95% confidence intervals by sex and age group

	Age	Mean	LW CI	UP CI
<b>Males</b>	18-29	0.89	0.88	0.90
	30-39	0.87	0.85	0.88
	40-49	0.86	0.85	0.88
	50-59	0.84	0.83	0.86
	60-69	0.82	0.80	0.84
	70-79	0.84	0.82	0.86
	80+	0.83	0.80	0.86
<b>Females</b>	18-29	0.87	0.86	0.89
	30-39	0.87	0.87	0.88
	40-49	0.84	0.83	0.86
	50-59	0.83	0.81	0.84
	60-69	0.82	0.81	0.84
	70-79	0.81	0.80	0.83
	80+	0.81	0.78	0.84
<b>Total</b>	18-29	0.88	0.87	0.89
	30-39	0.87	0.86	0.88
	40-49	0.85	0.84	0.86
	50-59	0.83	0.82	0.84
	60-69	0.82	0.81	0.83
	70-79	0.83	0.81	0.84
	80+	0.82	0.80	0.84

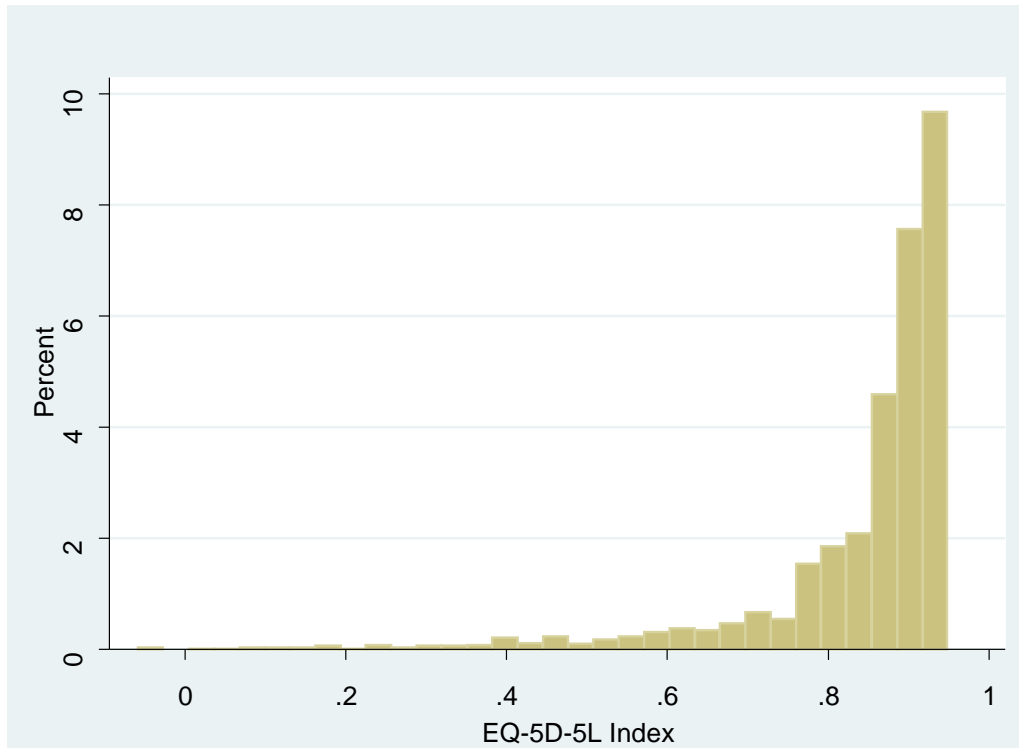
There was no difference in EQ-5D-5L index scores by AHS zone ( $p = 0.582$ ) (see Table 2).

**Table 2:** Mean EQ-5D-5L index scores in Alberta by AHS zone

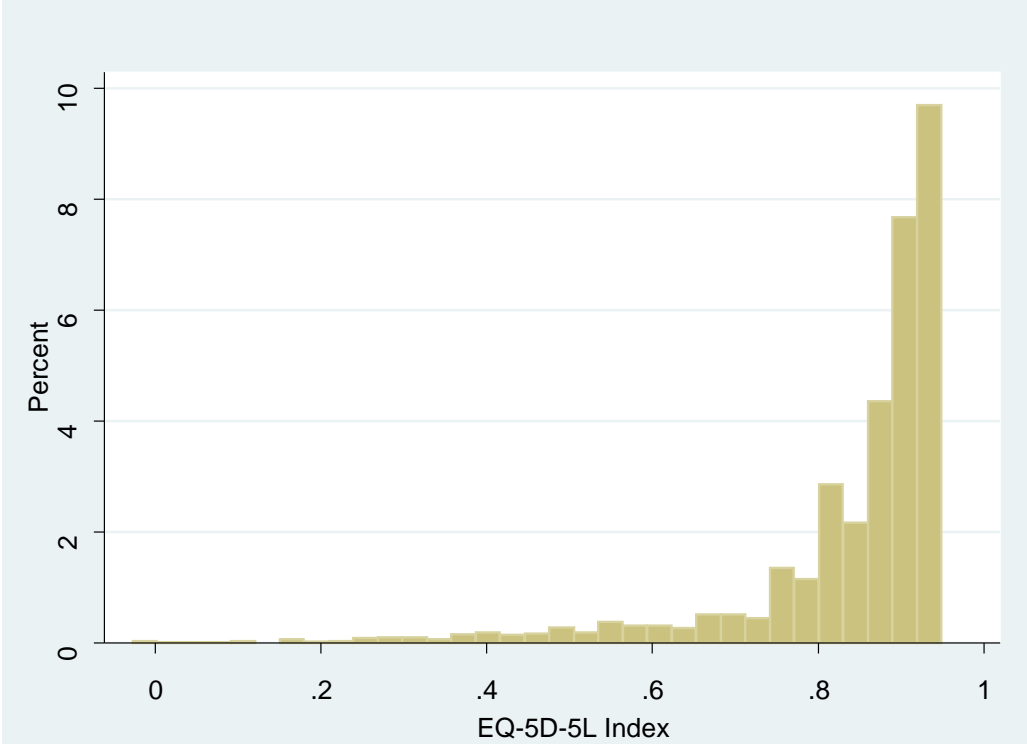
AHS Zone	EQ-5D-5L Index score	LW CI	UP CI
South	0.83	0.82	0.84
Calgary	0.86	0.85	0.87
Central	0.85	0.84	0.86
Edmonton	0.85	0.84	0.86
North	0.84	0.83	0.85

Like most population health surveys, the distributions of the EQ-5D-5L index scores for the overall Alberta population, and by age, sex, and AHS zone are skewed. The median [inter-quartile range] EQ-5D-5L index scores for males and females were 0.90 [0.83, 0.95] and 0.90 [0.82, 0.95), respectively (Figures 2 & 3). The medians and distributions generally followed the same patterns; decreasing scores by increasing age and no difference by sex or AHS zone (see Figures 4-7).

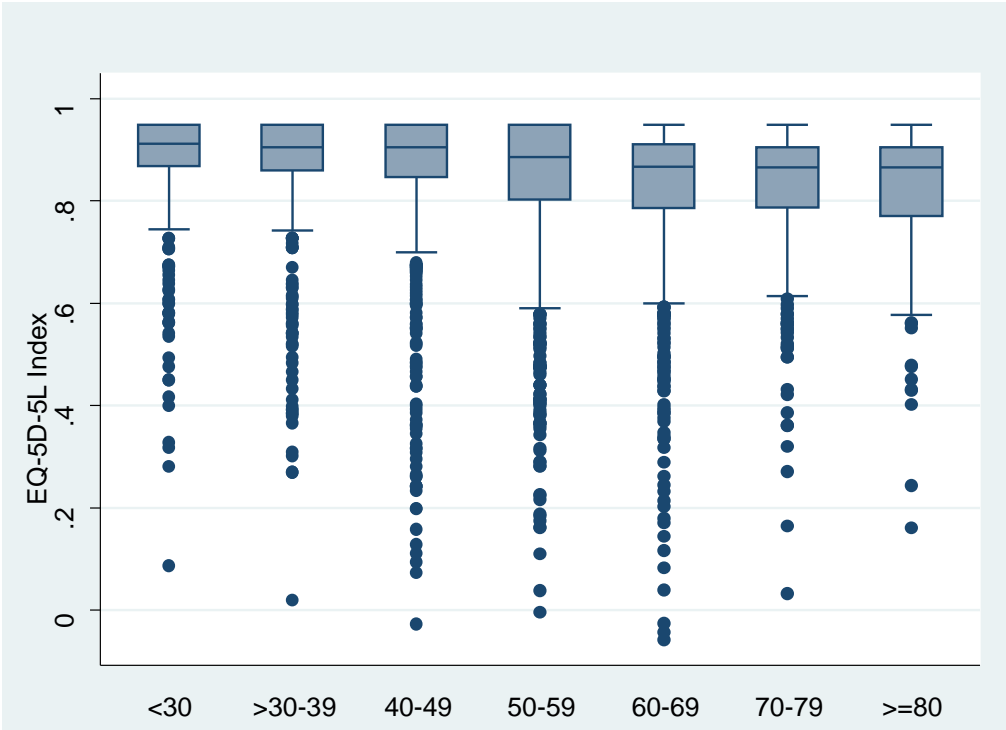
**Figure 2:** Histogram of EQ-5D-5L index scores for males



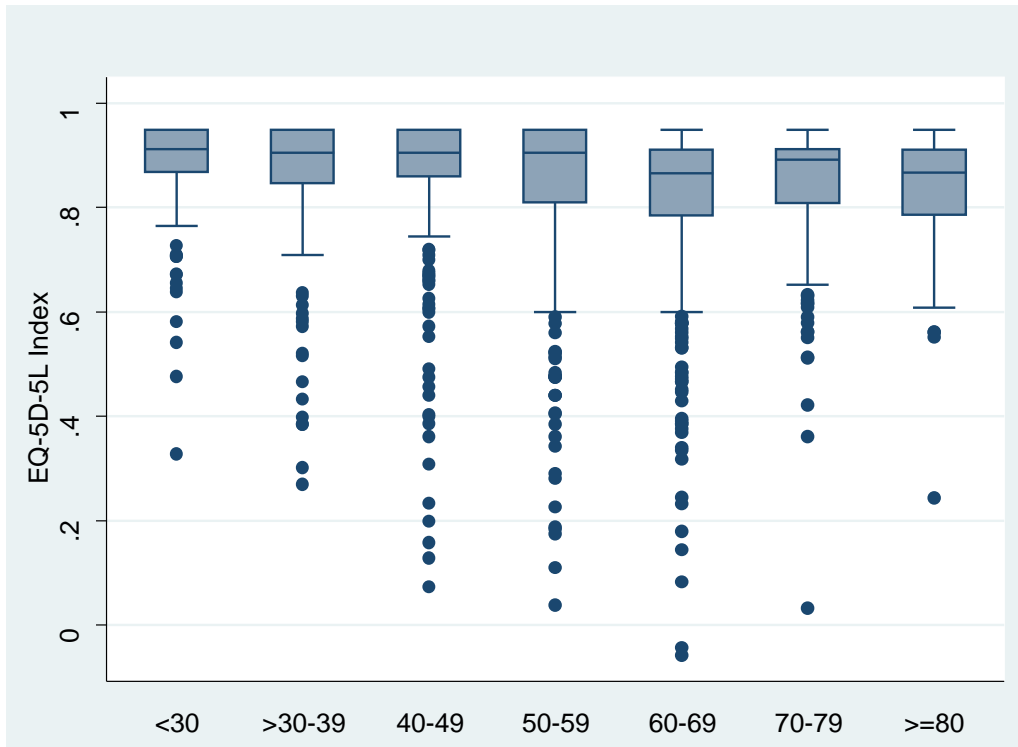
**Figure 3:** Histogram of EQ-5D-5L index scores for females



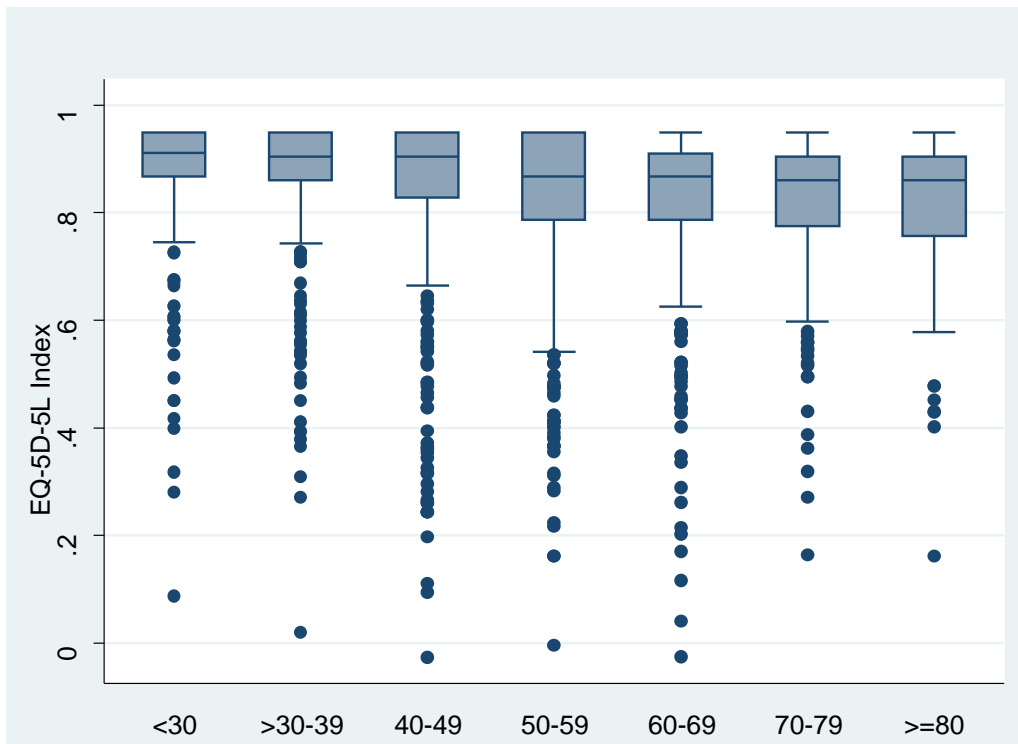
**Figure 4:** Box and Whisker plot of EQ-5D-5L index score by age



**Figure 5:** Box and Whisker plot of EQ-5D-5L index score for males by age



**Figure 6:** Box and Whisker plot of EQ-5D-5L index score for females by age



**Figure 7:** Box and Whisker plot of EQ-5D-5L index score by AHS Zone

